

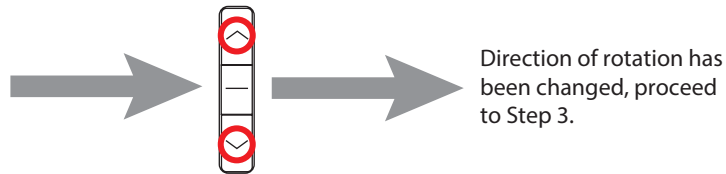
## Motor Programming for Wand Motors



### 1. MOTOR ROTATION:

Press UP or DOWN .

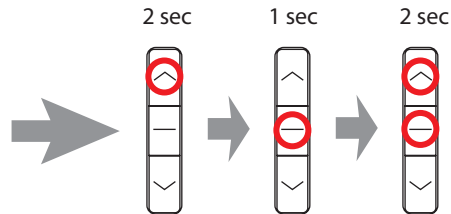
When pressing UP or DOWN shade should travel in the correct direction. If it travels in the opposite direction, press UP + DOWN key together for 2 seconds, shade will jog once and reverse direction.



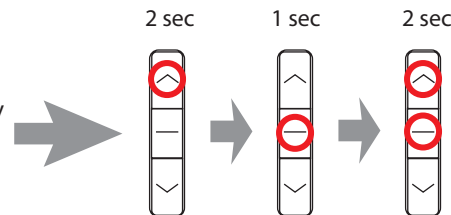
### 2. SET UP/DOWN LIMITS:

During the limit setting mode, pressing UP or DOWN will make the motor jog in that direction. Long pressing the keys for 2 seconds will move the motor continuously.

Press UP for 2 seconds. Bottom rail will travel upwards. Press STOP to stop the shade at desired UPPER limit. You can adjust the position by short pressing the UP and DOWN keys. Press UP and STOP for 2 seconds. Motor will jog twice and record the UPPER limit.



Press DOWN for 2 seconds. Bottom rail will travel downwards. Press STOP to stop the shade at desired LOWER limit. You can adjust the position by short pressing the UP and DOWN keys. Press DOWN and STOP for 2 seconds. Motor will jog twice and record the LOWER limit.



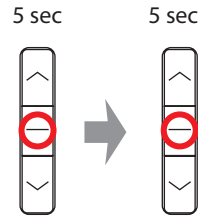
## Motor Programming for Wand Motors

### 4: SETTING FAVOURITE POSITION (OPTIONAL):

After setting UPPER and LOWER limits (step 3), you can proceed to setup FAVOURITE position.

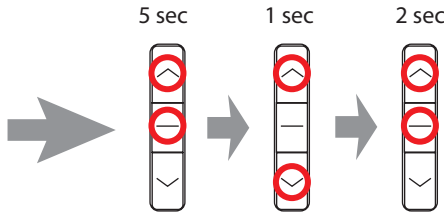
Bring the shade to its desired position by using UP/DOWN keys and then stopping it where you wish to setup new FAVOURITE position.

Press the STOP key for 5 seconds. Motor will jog once. Press STOP again for 5 seconds, motor will jog twice. FAVOURITE position is now confirmed.

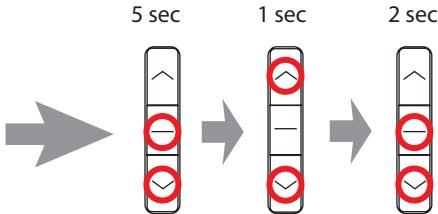


### 6. FINE TUNING UPPER/LOWER LIMIT (IF NEEDED):

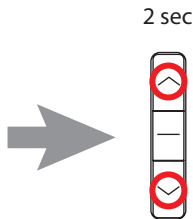
Press UP and STOP for 5 seconds to enter UPPER limit adjustment mode. The shade will jog once. Press UP or DOWN keys to adjust the shade to its new UPPER limit. Please note that shade remains in jog mode during limit adjustment mode. Press UP and STOP for 2 seconds to record the new UPPER limit. Shade will jog twice to confirm.



Press DOWN and STOP for 5 seconds to enter LOWER limit adjustment mode. The shade will jog once. Press UP or DOWN keys to adjust the shade to its new LOWER limit. Please note that shade remains in jog mode during limit adjustment mode. Press DOWN and STOP for 2 seconds to record the new LOWER limit. Shade will jog twice to confirm.



Press UP and DOWN keys for 2 seconds to switch to jog mode. Repeat the above procedure to switch back to continuous mode. NOTE: This operation can not be carried out when the shade is its UPPER/LOWER limits.



### 7: RESETTING THE MOTOR:

Using a paper clip, press the SETTING button on the back side of the control for 10 seconds. The motor will jog twice. All limits have now been erased.

